

The AOVX logo is located in the top right corner. It consists of the letters 'AOVX' in a bold, white, sans-serif font. A red swoosh underline is positioned under the 'X', extending from the top right of the letter and curving upwards and to the right.

AOVX

AOVX GX100 Quick Start

Goods Tracker

V2.0

Contents

Contents	2
1 Introduction	3
1.1 Device overview.....	3
2 Set up your device	4
2.1 How to insert SIM card.....	4
2.2 How to connect to computer.....	5
2.3 How to install USB driver.....	5
2.4 Local configuration.....	6
3 LED light indications	8
Safety Information	9

History

Revision	Date	Author	Description
V1.0	2021/11/119	YUKI	Initial
V1.1	2022/01/10	YUKI	Upgrade Platform
V1.2	2022/01/25	YUKI	Upgrade LED indications
V2.0	2022/04/06	YUKI	Upgrade layout

1 Introduction

1.1 Device overview



Figure_1 Overview of GX100

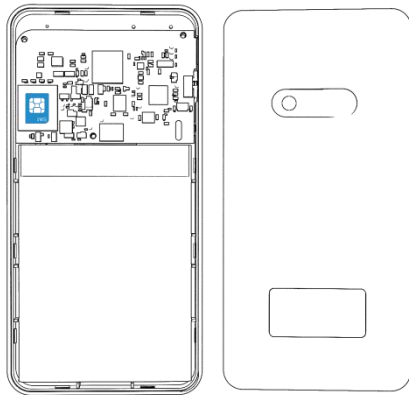


NOTE: Please use the USB cable provided by AOVX.
Support GM100, GL100, GG100 series.

2 Set up your device

2.1 How to insert SIM card

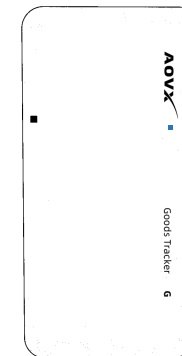
- 1 Remove the **back cover**.
- 2 Then insert the **Nano SIM card**;
- 3 Turn the switch to **I**. Then check the LED light is in normal state. See **LED indicators**.



Figure_2 Remove the cover and insert SIM card



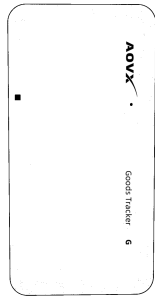
Figure_3 Turn the switch to "I"



Figure_4 Check the LED indicators

2.2 How to connect to computer

- 1 Make sure the device is powered on and check the LED light is in normal state. See [LED indicators](#).
- 2 Then connect the device to computer via USB data to serial port cable.



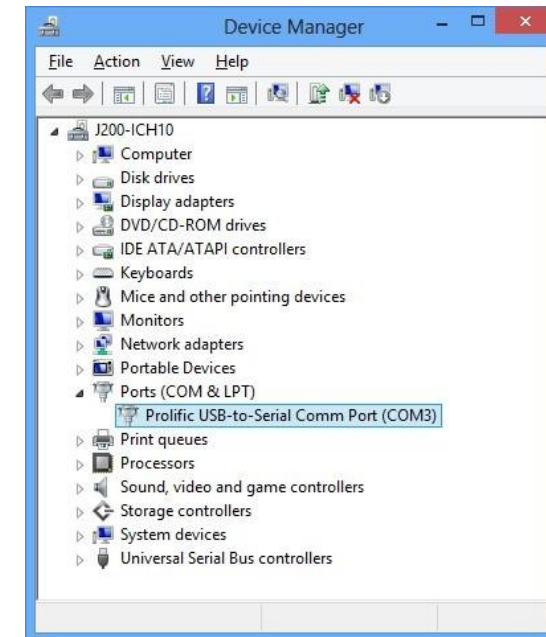
GX100



COM1

Figure_5 Connect device via USB cable

- 3 After installation, go to **Device Manager** and check for the “**Prolific USB-to-Serial Com Port**” device and the **COM port** number assigned by Windows.
- 4 You are now ready to use the device on your computer.



Figure_6 Check COM port

2.3 How to install USB driver

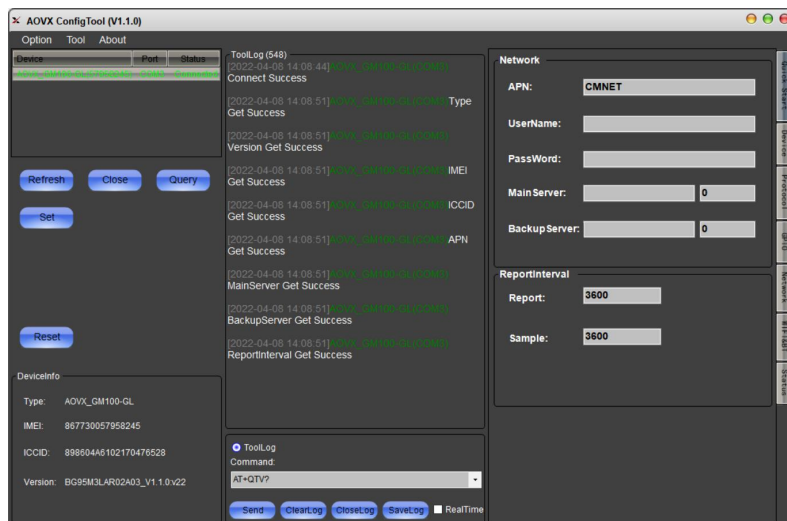
- 1 Please download the USB-to-Serial cable driver [here](#).
- 2 Install the driver according to the prompt on the screen.

2.4 Local configuration

All devices will have default factory settings. These settings should be changed according to the user's needs. If you need to change the parameters, please configure them through the latest **configuration tool**.

1 Configuration process begins by connected device to computer via cable.

Open the **configuration tool**; Select the corresponding COM port; **DeviceInfo** is in the lower left corner of the tool, it shows the **Type**, **IMEI**, **ICCID** and **Version** of the device. Main buttons offer following functionality:



Figure_7 Config tool window

- ① **Option- Language-** Languages supported by the tool.
 - **View-** Check log or tool log.
 - **Property-** Settings of the tool.
- ② **Tool- Protocol Analyze-** Analyze JT/T808 protocol.
 - **Download-** Loads upgrade package from file..
- ③ **About- Version-**The version of the tool.
 - Help-** If you need more information contact us here.
- ④ **Refresh-**Refresh the COM port and device information.
- ⑤ **Connect-** Connect the COM port.
- ⑥ **Query-** Query the device information.
- ⑦ **Set-** Save configuration to device.
- ⑧ **Reset-** Restart the device.
- ⑨ **Quick start-** Configure Network and Report interval.
- ⑩ **Device config-**configure the device information
- ⑪ **Protocol-**configure protocol, report mask, Bluetooth mask, sensor mask.
- ⑫ **Network config-**configure band and LTE.

2 Make sure you click **set** after every configuration. Most important configurator section is **Quick Start** – where all your server and network can be configured. More details about G series configuration can be found in **GX100 User Manual**.

2.5 SMS configuration

Quickly set up your device by sending SMS commands to it:

Table 1 SMS commands

commands	Examples
IP= <index>,<ip>,<port>	configure IP
APN= <apn>,<name>,<password>	configure APN
TIMEZONE= <zone>	configure timezone
TIMEGAP= <index> + <time>	configure report interval

More details about the commands in the list can be find in **AOVX AT commands**.

Default configuration settings

Report Interval



Report: Report every 3600s by default.



Sample: Sampling every 3600s by default.

Device configuration



Work mode: Optional.



G sensor: Range: ±4G; Threshold: 100; Time: 3; Interval time: 10 by default.



Temp&Humi sensor: Interval: 10s; Tmax: 40; Tmin: 10; Hmax: 50; Hmin: 10 by default.



Light: Threshold: 500; Interval: 10s by default.



Timezone: UTC+8 by default.



GNSS Galaxy: GPS+BD by default.

Protocol



Protocol: Type: JT808 by default; Ver: 2013; Encry: NULL; Link: TCP by default. Reportmask, Bule toothmask and sensormask are optional.

3 LED light indications

The red light shows the battery state of the device. The blue light shows the system state. More details find in the table2.


LED indication

Table 2 LED indication

COLOR	DESCRIPTION	STATE	MEANING
Red	Charge indicator	On	Charging
		Flash	Battery is absent
		Off	Full charging or disconnect with USB cable
Blue	System indicator	Flash slowly	Work normally
		Flash quickly	Work abnormally
		Off	Switch off or in sleep mode

Safety Information

This message contains information on how to operate GX100 safely. By following these requirements and recommendations, you will avoid dangerous situations. You must read these instructions carefully and follow them strictly before operating the device!

 To avoid mechanical damage, it is advised to transport the device in an impact-proof package. Before usage, the device should be placed so that its LED indicators are visible. They show the status of device



Do not disassemble the device. If the device is damaged, the power supply cables are not isolated or the isolation is damaged, DO NOT touch the device before unplugging the power supply.



All wireless data transferring devices produce interference that may affect other devices which are placed nearby.



The programming must be performed using a PC with autonomic power supply.



Installation and/or handling during a lightning storm is prohibited.



The device is susceptible to water and humidity.



AOVX is not responsible for any harm caused by wrong cables used for connection between PC and GX100



WARNING! Do not use GX100 device if it distracts driver or causes inconvenience due to GX100 placement. Device must not interfere with driver.



Battery should not be disposed of with general household waste. Bring damaged or worn-out batteries to your local recycling center or dispose them to battery recycle bin found in stores.